



SCAN LIFE

news from SCAN NEW YORK winter/spring 2010

Addams Family Theatre Benefit to Honor Jane Overman

This May 12th, SCAN will be holding its annual dinner and theatre benefit honoring Jane Overman, SCAN Chairperson. A founding director of SCAN 33 years ago and as enthusiastic about SCAN today as she was back then, Jane has been instrumental in helping SCAN achieve its most significant accomplishments, including its *Reach for the Stars Program* and the SCAN-LaGuardia merger, and she has been key to SCAN's ongoing financial and program strength. (See related article on page 2.)



The annual dinner will be held at the Marriott Marquis and followed by

"The Addams Family," a new Broadway musical promising an evening of mischievous fun. The musical's springboard is the characters created by legendary cartoonist Charles Addams which themselves inspired numerous TV and movie productions. Addams' characters — Gomez, Morticia, Fester, Lurch and the others — combine the twisted, macabre and just plain weird with charm, wit and enchantment, according to production notes. Tickets may be purchased by contacting Jessica Gonzalez. (212-289-8030 or jgonzalez@scanny.org).



SCAN Chairperson Jane Overman

YES, I CAN! A SCAN Story

Christina Dejesus, a striking 20-yr old, is nothing short of amazing. Brimming with self-confidence and charisma, it is not an exaggeration to say that Christina renders her audience agape with wonder, respect and admiration. Nor is it an exaggeration to say that Christina personifies SCAN's theme, "YES, I CAN."

It wasn't always this way.

Five years ago, Christina was arrested following a dangerous assault. "I was very aggressive, short tempered, irresponsible and truant," Christina recalled. "I had lost respect for myself, others and lost desire for an education."

"Helping Others Helped Me"

Heading nowhere fast, SCAN stepped in and gradually Christina began to



Christina Dejesus

"I saw that I had been a negative leader. Then I saw that you could take the same leadership role and put it in a positive way."

see herself and her future differently. "I was the first female Peer Leader. I started to help the others and then I realized I was helping myself." Christina, then pregnant, went on to graduate from high school and subsequently enrolled at Bronx Community College, where she is in her second year of a 4-yr BA program in nursing. Speaking at SCAN's Violence Prevention Program reception at Jane Overman's home in November, Christina quipped, with more than a hint of seriousness, "I practice things I learned at SCAN on my 2-year old. He's the one that keeps me going."

continued on page 6

JANE OVERMAN – The Woman Behind SCAN for 33 Years

“33 years. They have gone by so fast,” Jane Overman admits reluctantly and with a trace of disbelief and wonder. She is recalling SCAN’s beginnings and the generations of New York City youth who have been touched by SCAN over those many years.

In 1977 Jane Overman, a member of the Eisman Foundation Board, listened as SCAN’s future founder, Nancy Fisher, set out a proposal to address neglectful parenting, an issue which had received scant attention at the time. Nancy’s proposal called for volunteer parent aides to train inner city parents in the skills of parenting, a task bewilderingly difficult for families struggling with poverty, illiteracy, family breakdown and substance abuse. At the urging of Jane and others, the Eisman Foundation provided Fisher with a start-up grant up \$50,000, a big sum in those days. “I thought it was a good idea. It was cost effective. And it would help the City deal with the quiet problem of abuse, the ‘silent

At the urging of Jane and others, the Eisman Foundation provided Fisher with a start-up grant up \$50,000, a big sum in those days.

killer’ of children,” Jane says assessing the program’s early allure.

And so the Supportive Children’s Advocacy Network, now known simply as SCAN, was born. Training roughly 20 volunteers in intense sessions twice a year to work with abusive parents and working from a 1-room office, SCAN’s mission was straightforward but demanding and



Former New York City Mayor, Ed Koch (left) with Jane Overman (center) and Nancy Fisher (right)

difficult. The task was one of “reparenting” – helping parents learn how to talk to and interact with their children in a positive way.

Ten years later, with Lew Zuchman as Executive Director, SCAN began to expand its sights, offering supplemental education services and after school programs with a funding base now largely derived from government funds. The goal, however, remained the same: provide the City’s most at-risk population with the opportunity for growth and development.

Jane, a founding SCAN director, took a deep personal interest in the programs and the children. “Family therapy always interested me,” Jane reminisces. “I should have been a family therapist,” she adds tentatively. Perhaps, but what is clear is that Jane has been the inspiration and driving force behind many of SCAN’s most successful initiatives. Too many to list, a few illustrations provide a flavor of Jane’s energy, focus and commitment.

“Lew was talking about PeeWee [one of the SCAN youth rescued from an abusive family] and how bright and capable he was and how, with special attention, he would be able to make it. I said to Lew, ‘If there’s one PeeWee out there, there are more. They just don’t have the opportunity.’” And with that insight, *Reach for the Stars*, SCAN’s upward bound program, was born.

To this day, she presses for updates on the kids she has followed for years. “I know them,” she says passionately.



Jane was also an early enthusiast and supporter of the successful family camping weekends. Pausing now to think of these winter retreats, where families escaped the stressful grind of inner city poverty and lived together out in the open in the country, Jane’s heart explodes with happiness – the kind that is shared – and pride. “Some of them have never been outside of their neighborhood, let alone to the country,” she remarks wistfully.

To say that Jane worries about SCAN

every day might exaggerate the case, but only slightly. She regularly checks in with Lew to follow up on issues, ideas and funding possibilities.

To this day, she presses Lew for updates on the kids she has followed for years. “I know them,” she says passionately. “I want to know what’s going on. And I am so proud of our success stories.” 🧑🏻‍🤝‍🧑🏻

SCAN WORKS RESULTS WITH STRUGGLING TEENS

Jane Overman's living room was swollen beyond its limit this past November as Derek Schuster, SCAN Associate Executive Director, first introduced two SCAN youths involved in SCAN's Violence Prevention Program (VPP) and then Lloyd and Vicki Goldman, passionate SCAN supporters. The audience of SCAN directors, staff and donors experienced a kind of amazement, hope and pride.

SCAN's VPP has been the subject of many SCAN Life articles. No wonder. The program – designed to 'rescue' youth from detention for criminal misconduct and assist them in coping with anger, curbing aggression and making sound life decisions – achieves results. Not every teen is rescued, of course, but SCAN's VPP, the only 100% privately funded program of its kind in the City, achieves

success rates between 53% and 92% with regard to 9 violence-related behavior criteria.

The Peer Leader Approach

One of the keys to the SCAN VPP success is its Peer Leader program, where successful VPP graduates work with other struggling youth to provide encouragement, support and guidance.

The program – designed to 'rescue' youth from detention for criminal misconduct and assist them in coping with anger, curbing aggression and making sound life decisions – achieves results.

In the Overman's crowded living room, Christina DeJesus (see related story on page 1) shared her experience as a Peer Leader with 16-yr old Mamadou Diallo, an African immigrant young

man and now a new SCAN peer leader himself, who was released into SCAN's VPP from the Manhattan Family Courthouse where he was awaiting trial following his arrest for theft of a bicycle. The interview format enabled Mamadou – and the audience – to see and hear what made Christina such a success. Mamadou, only months into his role as Peer Leader, credited the program with helping him with his "anger problem" and helping him to envision a future with a college education and later, office work involving Math, which he likes and is good at.

Honoring VPP's

Supporters

The reception also provided an intimate venue to honor Lloyd and Vicki Goldman, strong supporters of SCAN and the Violence Prevention Program.

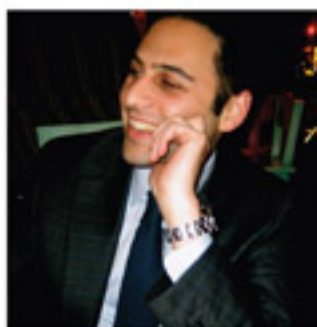
3

NEW SCAN DIRECTOR GOLDSMITH IS AT HOME WORKING WITH CITY YOUTH

SCAN is delighted to announce the appointment of Evan Goldsmith to the SCAN Board of Directors.

Goldsmith, 33, founded The Hemisphere Organization, a New York based debt and equity real estate investment company. Previously he was the Chief Operating Office of a major condominium conversion in Greenwich, Connecticut and, before that, he worked on a large residential condominium conversion on the Upper East Side. Goldsmith has been a featured lecturer on real estate acquisition and development for the New York University Entrepreneur and Investors Group.

Goldsmith graduated from Georgetown University with a BA in English in 1998. While at Georgetown, Goldsmith




Evan Goldsmith

co-founded the Sursum Corda Family Literacy Program in Washington. Along with fellow students, he helped start a student-run volunteer organization that taught underprivileged and single-parent children in a city-run housing project how to read. In time, Goldsmith and his colleagues began to appreciate the significance of overall family literacy, and the program at times incorporated teaching the parents how to read as well.

Goldsmith joined the SCAN Board in 2009 and, at the same time, took over as Chair of the Finance Committee. "Evan is a very capable and enthusiastic board member," said Richard Asche, SCAN's recently elected Board President (see pg 4). "He joined us last spring and has already shown

SCAN's VPP achieves success rates between 53% and 92% on 9 violence-related behavior criteria.

In the company of many of their friends, Schuster applauded Lloyd's generosity of spirit and his 'nuts and bolt' approach to life and Vicki's commitment to providing a safe place for kids to be kids. Lloyd's response to receiving the honor? "It's the kids who deserve the real honors." Peer leaders themselves, Lloyd said, "We've invited people here because we think it is important for others to see young adults getting helped." Vicki's response? "The bottom line is the kids."


See photos above and right. 



1. *Beatrice Schapiro, with Stuart Greenspon, immediate past President of SCAN. Beatrice is affiliated with the Guggenheim Foundation, a new supporter of SCAN's VPP.*
 2. *Derek Schuster with SCAN honorees Vicki and Lloyd Goldman.*
 3. *Mamadou Diallo with Lew Zuchman, SCAN Executive Director. Mamadou, born in Guinea, joined SCAN's VPP in September 2009. As a Peer Leader, one of his mentees is Javon Davis, the 13-yr old honored last year at a VPP reception and the subject of a SCAN Life article last year. Javon, no longer on probation, is back with the VPP voluntarily and with his mother's active support. Mamadou is looking forward to working with Javon and other SCAN youth.*



a terrific willingness to roll up his sleeves and work with SCAN and the Board."

Said Goldsmith, "What most impressed me was SCAN's appetite for helping underprivileged young people. And that's what I've done." Reflecting on his experience at Sursum Corda Family Literacy Program, Goldsmith said, "After my 4 years there, they were reading. You can make a difference." What does he want to do at SCAN? Get to know the kids, visit the programs and see where great things happen. 


SCAN BOARD ELECTS RICHARD ASCHE AS NEW PRESIDENT



Richard Asche

At the SCAN annual meeting held this past November, directors elected Richard Asche President. Long an advocate for those in need, Asche has been involved with South Brooklyn Legal Services, Boys Harbor and the Project for Psychiatric Outreach to the Homeless. A member of the SCAN Board since 2005, Asche is also a partner at Litman, Asche & Gioiella, LLP.

Said Asche, "Like all social services agencies, we have been trying to survive this period of financial hardship. The challenge for SCAN going forward is to hone the definition of our mission and ensure that we can still meet the needs of our at-risk constituencies. I am looking forward to spearheading that effort along with the SCAN Board."

Asche replaces retiring President Stuart Greenspon who had served for the previous 5 years. Referring to his predecessor, Asche said, "I have pretty large shoes to fill." He paused and then almost as an afterthought, jokingly added, "But I have pretty big feet!" 

SCAN WINS \$3.7M GRANT to Operate New Johnson Community Center

The state-of-the-art, brand new Johnson Community Center stands proudly in the heart of East Harlem at 113th and Lexington Avenue. In the face of cutbacks affecting every facet of New York City life, this building represents the stubbornness of hope. A Bloomberg initiative, the Johnson Center, which will open in the spring of this year, will be home to a vast array of youth and community programming and is literally a “home away from home” for many.

SCAN Faced Stiff Competition for Large Grant

Following a competitive bidding process last fall, SCAN was awarded the 5-year, \$3.6 million contract to operate the new Johnson Community Center. The grant from the NYC Department of Youth and Community Development (DYCD) was the second largest out of 25 awarded last year and attracted stiff competition in the belt-

tightening economy experienced by non-profits. Louis Polese, SCAN Deputy Executive Director who headed the grant writing team, said, “I think that SCAN’s experience in providing services, our demonstrated capacity to manage a project of this size, our connection to the East Harlem community and our ideas about running the center helped us get this award.”

Responding to the DYCD’s focus on theme-based learning, SCAN used its “Yes, I Can” theme as the central

organizing principle for its program strategy. All of SCAN’s comprehensive programming, targeted at youth age 5 to 21, reflects and supports the “Yes, I Can” theme.

“This is a dream come true. Not just for SCAN, but for the entire Johnson House community and the other projects in the vicinity,” said SCAN Executive Director, Lew Zuchman. “Providing comprehensive services under one umbrella community center – and this is a real community center, in the community and

for the community – this is the best way to provide services. And this is what we do best.”

The 5-year contract is especially important, and not only for the financial stability it offers to SCAN. “Continuity is key to making a difference. You can’t just walk in and expect to change anything overnight. But, we have a home base now and we can build a community-based family support system. We can

build it to last,” said Zuchman with his typical enthusiasm. The size of this grant is also a bonus for the community. “This is a very, very large grant – large enough to run a really good program,” Zuchman observed.

The new Johnson Center will change the calculus for program offerings. Services on a much smaller scale had been offered by SCAN in the basement of Johnson House, a dark and limited facility which, not atypically, struggled to deliver opportunity to local youth who

“This is a dream come true. Not just for SCAN, but for the entire Johnson House community and the other projects in the vicinity,”

SCAN Executive Director, Lew Zuchman



Johnson Community Center.

desperately need a reason to stay off the streets. The new Johnson Center has a modern gym, a large stage that opens to the outdoor creating an amphitheatre, two kitchens and a technically advanced indoor and outdoor sound system. The facility is inviting and exciting.

Bringing the Johnson Community Center under SCAN’s wing gives SCAN the distinction of serving more than half of the youth in East Harlem who participate in city supported youth programs. Typical projects include homework help, a wide variety of sports and fitness programs, science and math support workshops, dance, reading clubs, college prep, job internships, and GED classes. The Johnson Community Center will serve as many as 1000 members of the local community. In addition, SCAN will provide space for local community groups, such as senior citizens associations, to sponsor programming and special activities. 

LEWIS ZUCHMAN, Executive Director



Lewis Zuchman

These past two years have been exceedingly difficult. Intense financial pressures, engendering powerful negative socio-economic ramifications, have created a wellspring of stress for so many of our SCAN family. Government, foundation, corporate and private contributions have significantly diminished, even as the needs of our SCAN families, parents and children have incrementally increased.

Yet, the spirit of SCAN remains steadfastly resolute. This spirit may be seen throughout this edition of the SCAN News.

The powerful emergent success of Christina De Jesus (see pg 1) a graduate of our Violence Prevention and Anti-Gang Violence Programs, and the positive beginnings of Mamadou Diallo's journey with SCAN (see pg 3). These SCAN journeys could only occur with the support of our valued SCAN contributors, as our Violence Prevention Program is 100% privately funded!

As need has intensified, our SCAN Board of Directors has struggled mightily to increase our fund raising efforts. Evan Goldsmith, our newest Director (see pg 3), joined us at a moment of significant challenge. Richard Asche, whose beloved mother was a founding SCAN Board of Director, accepted the mantle of Board President in the heart of our fiscal turmoil.

Dear SCAN Family,

As the Board pondered SCAN's Annual Theatre Benefit, it turned to Jane Overman – SCAN's Chairperson, principal fundraiser, a founding SCAN Director and Board President and, indeed, the heart and soul of our organization for 33 years – for approval and support. "Why not honor Jane?" asked a Director. And so, our 2010 Annual Theatre Benefit, will, in fact, honor the woman who has been SCAN's principal benefactor for over three decades!

As we go to press, a rainbow emerges. SCAN has been awarded a multi-million dollar grant to sponsor a new community center in East Harlem (see pg 5). A gracious contribution from Barbara Slifka and the Slifka Family Foundation will enable us to maintain both our privately supported "Reach for the Stars" upward bound program, which celebrates more than 20 years of enabling each and every SCAN young person to figuratively fly as high as their wings will take them, and our SCAN Mullaly Academy, which will celebrate its 20th consecutive year of service to the families and children of the South Bronx.

We remain resolute to insure that Christina DeJesus continues on her positive life journey. We hold Mamadou's hand as he begins his new direction and haltingly takes his first positive steps. We stand together with all the members of our SCAN family who afford a 'helping hand' to so many others in our SCAN family battered by the tsunami that has reached our nation. We thank you!

Peace & Blessings

YES, I CAN — Christina DeJesus from p1



Christina DeJesus with Mamadou Diallo, taking questions at the reception at Jane Overman's

But Christina seems to have a vision about her goals which goes beyond her 2-year old son. Sharing insights with Mamadou Diallo at the Overman reception (see related story on page 3), Christina revealed, "I became a Peer Leader because I felt like I could make a difference. When I meet someone on a path to destruction, I want them to see they can change." Her advice to Mamadou: "I saw that I had been a negative leader. Then I saw that you could take the same leadership role and put it in a positive way. Keep on doing what you're doing."

Derek Schuster, Director of SCAN's VPP, was absolute in his support. "Christina is the most effective Peer Leader we've ever had."

Board of Directors

Chairperson of the Board

Jane L. Overman

President

Richard Asche

Vice Presidents

Nancy Fisher, Founder

Fran Levitt, CSW

Nan Puryear

Treasurer

Evan Goldsmith

Secretary

Joan A. Malkin

Board of Trustees

Vincent DeGiaino

Stuart P. Greenspon

Richard Goodman

Betty L. Hess

David Kraus

Rita Lambek, Ph.D.

Margaret T. McHugh, M.D., MPH

Jamel Oeser-Sweat

Mark Scharfman

Lawrence A. Taylor, CPA

Warren Whitlock

Nadine M. Gomes Williams

Past Presidents

Nancy Fisher, Founder

Stuart P. Greenspon

Betty L. Hess

Arthur Maslow, CSW

Jane L. Overman

Toni Randolph

Mickey Sirowitz, MS.ed

Jane Weprin

Advisory Committee

Oliver Crespo, Ph.D.

Hector Diaz

Rodger Hess

Armond Hill

Marc S. Kirschner, Esq.

Emily Menlo Marks

Carl Randolph, Esq.

Toni Randolph

Jane Weprin

Executive Director

Lewis Zuchman, CSW

Deputy Executive Director

Renee Avery



345 East 102nd Street, New York, New York 10029
Phone (212) 289-8030 • Web: scannny.org

SCANLIFE

Joan Malkin
Editor

Lew Zuchman
Executive Director